

2024

# Milla Long

WITH AN ATTACHABLE SHED



# Milla Long | Model Specification

My Milla Long model is a high quality Scandinavian style prefab house that caters to the needs of developers who specialize in camping sites and micro-living. With its intelligently laid out 47.80m<sup>2</sup>, My Milla Long offers a balanced mix of functionality, efficiency, and style. The home features a welcoming open plan living area and kitchen, a cozy private bedroom, and a bathroom on the first floor. Upstairs, a generous 17m<sup>2</sup> loft provides additional space for sleeping or storage. The house is complemented by a detachable shed, large enough to store two bicycles and a lawn mower.

## External dimensions

10.44 x 3.59 m (37.48 m<sup>2</sup> )

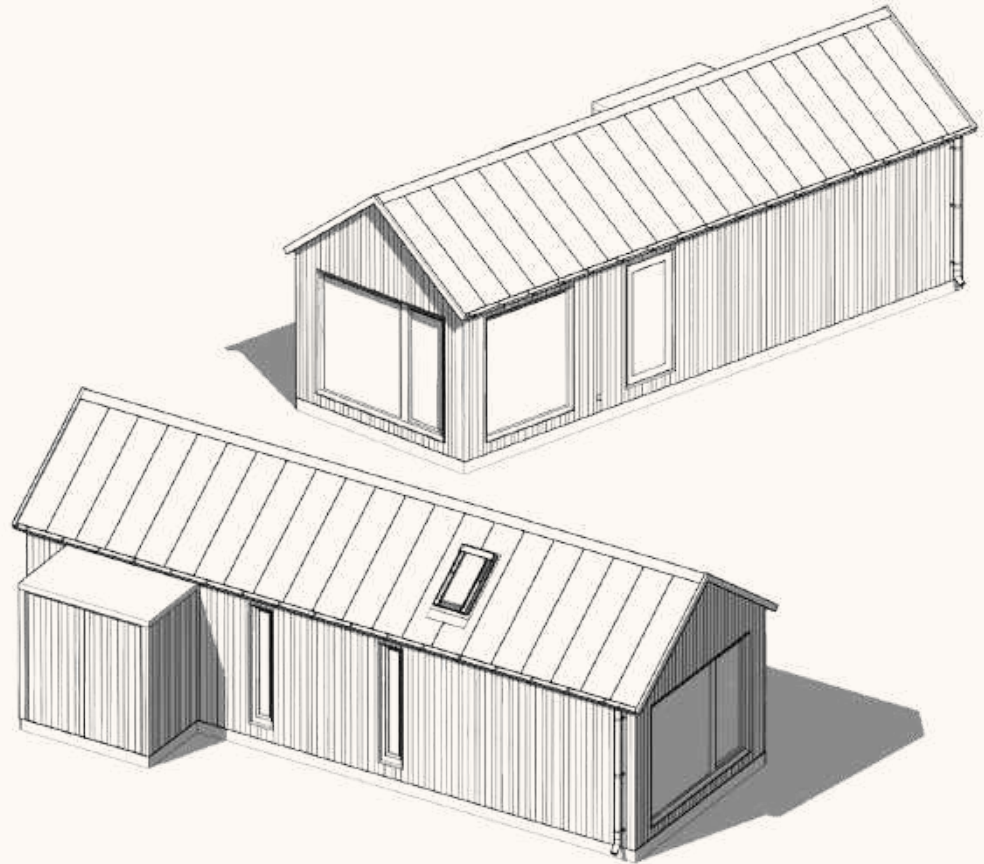
## Floor area with loft

47.80 m<sup>2</sup>

## Attachable shed

2.96m<sup>2</sup>

2.24m (H) x 2.24 m (W) x 1.32 m (D)



# Milla Long with an attachable shed | Model specification

**Full set: € 62,755**  
(Tax not included)

## STRUCTURAL COMPONENTS

- Floor: Panels insulated with 150mm mineral wool
- Exterior Walls: Panels insulated with 150mm mineral wool
- Roof: Panels insulated with 150mm mineral wool
- Interior Walls: Panels insulated with 100mm mineral wool
- Structural Timber: Grade C24
- Insulation: Mineral wool of ISOVER STANDARD 35

## EXTERIOR

- Precision-milled nordic spruce, dimensions: 21x120mm, grade: AB, finish: Anthracite, treated using TEKNOS products and techniques

## ROOFING

- Profile: Classic C, RUUKKI 30+
- Drainage: Gutter and rainwater system, RUUKKI

## WINDOWS AND DOORS

- Double-glazed PVC windows and doors, DRUTEX
- Color: Window profile in anthracite grey, RAL 7016 (inside/outside)
- Roof window 54x98, ROTO

## ELECTRICAL INSTALLATION

- Sockets and switches in black, SCHNEIDER
- Bathroom lighting, SYLVANIA
- Pre-installed lighting: Connections in living and bedroom areas
- Facade lighting: 2 units, NORDLUX
- Facade LED lightbox with a personalised name
- LED lights in the living room

## PLUMBING

- Infrastructure in the kitchen, shower, sink, floor, and boiler areas by WAVIN
- Outside tap

## SEWAGE SYSTEM

- Comprehensive setup for kitchen, shower, sink, and floor drain

## VENTILATION

- Outlets in the bathroom and kitchen walls, EUROPLAST

## INTERIOR FINISH

- Walls & Ceilings: Finely-milled nordic spruce, dimensions: 15x140mm, grade: AB, in semi-transparent white, treated with TEKNOS products

## FLOORING

- Laminate: white BIONYL PRO decor 1514, durability grade 33, complete with underlayment

## DOORS

- 2 units of solid oak doors

## BATHROOM

- Shower tray: RADAWAY 80x160, White
- Shower glass: Transparent 90 x 2000 mm
- Mixer: Thermostatic shower mixer, GROHE
- Sink and Vanity: LAUFEN
- Toilet: GROHE
- Lighting: 2 ceiling fixtures, SYLVANIA
- Boiler: ARISTON, 50L with WiFi

## STAIRCASE TO THE SECOND FLOOR

- White-painted metal (RAL 9016 )

## SECOND FLOOR RAILINGS

- Wooden railings with OSMO finish

## BUILT-IN STORAGE: HALLWAY

- Wardrobe in white: EGGER

## BUILT-IN STORAGE: BEDROOM

- Wardrobe in white: EGGER

## KITCHEN

- Kitchen cabinetry: EGGER
- Island: EGGER
- Sink: FRANKE
- Faucet: FRANKE
- Cooktop: ELECTROLUX
- Oven: ELECTROLUX
- Cabinet lighting: Under-cabinet LED

PLEASE NOTE: The price does not include the foundation materials, foundation installation work, the delivery and installation of the house - these will be additional charges. Please note that the exact costs for these services vary based on the unique characteristics and geographical location of each project.



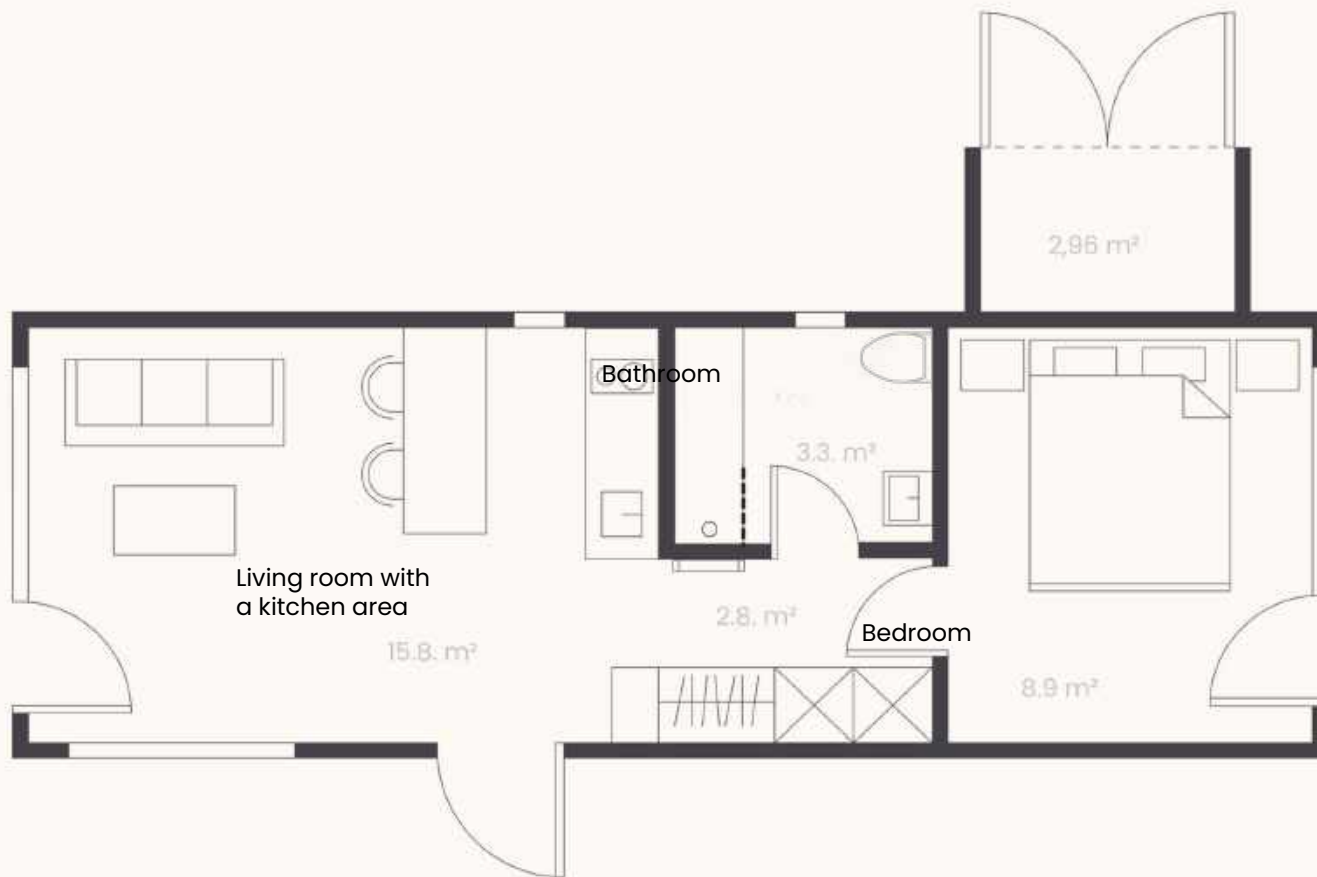
### ADDITIONAL EQUIPMENT

- ELECTRIC HEATED FLOOR WITH WIFI FUNCTION: CALEO PREMIUM, **€2,115**
- ELECTRIC RADIATOR SET WITH WIFI: ADAX IN WHITE (2 UNITS) FOR LIVING ROOM AND BEDROOM **€460**
- ELECTRIC TOWEL DRYER: WHITE, BY TERMA **€300**
- MECHANICAL VENTILATION HEAT RECOVERY SYSTEM ( 1 PCS) , SIEGENIA **€1,165**
- ATTACHABLE WOODEN SHED: 2.2 X 1.32M. CAN BE ATTACHED TO THE FACADE FOR OUTDOOR STORAGE **€5,595**



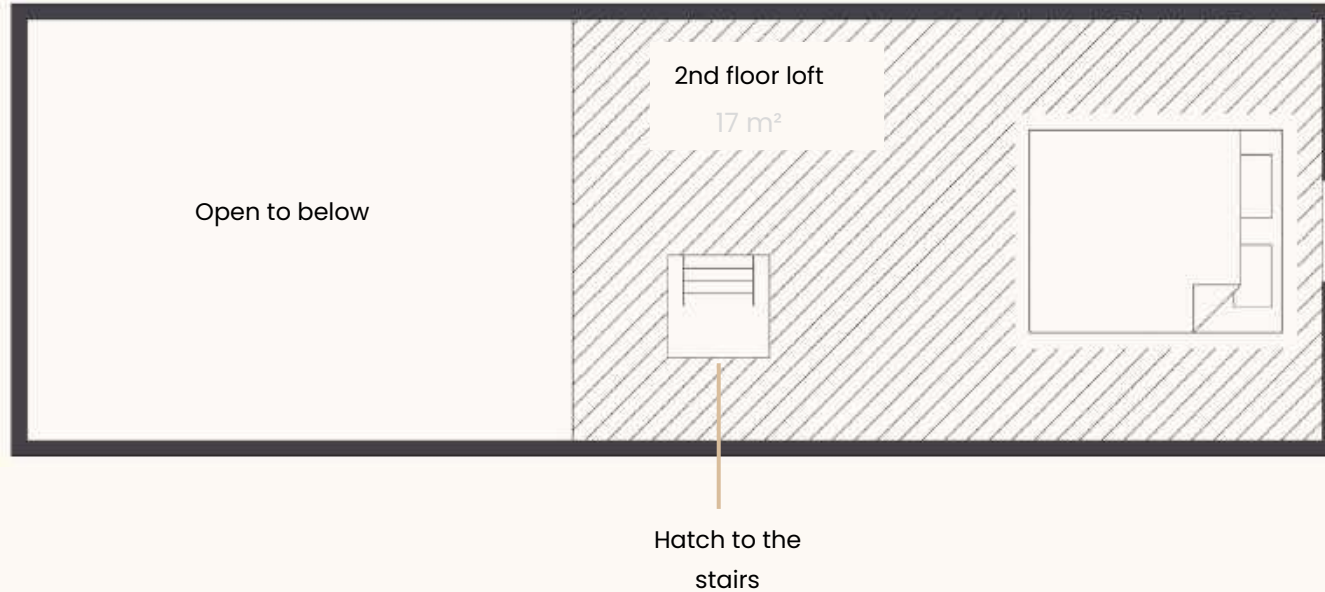
# Milla Long | Model specification

1st floor



# Milla Long | Model specification

2nd floor with a loft area





Milla Long | Model specification





Milla Long | Model specification









Milla Long | Model specification





Milla Long | Model specification





Milla Long | Model specification





Milla Long | Model specification



KITCHEN



FRANKE sink



FRANKE water mixer



ELECTROLUX Induction hub



ELECTROLUX fridge



Kitchen cabinets:  
EGGER chipboard



Kitchen worktops:  
EGGER chipboard



LED lights



BATHROOM WITH WC



TEMPESTA shower



ARISTON VELIS boiler



GROHE wall mounted  
toilet



LAUFEN sink



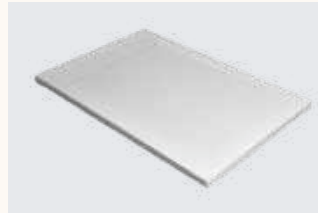
GROHE mixer



BATHROOM WITH WC



Custom made  
chipboard cabinet



TEOS shower tray



FIBO shower wall  
panels



EUROPLAST ventilation



SYLVANIA ceiling lamp



Solid oak door  
with brushed  
black metal  
handle and lock





INTERIOR



Powder coated metal stairs and a wooden railing



SCHNEIDER switches



Spruce, planed, 14 x 125 mm



Custom made bedroom wardrobe, chipboard



Laminate flooring, BIONYL PRO



Custom made cabinets in the hallway, chipboard



EXTERIOR



Roof: RUUKKII classic C



HERMIKO outdoor  
socket



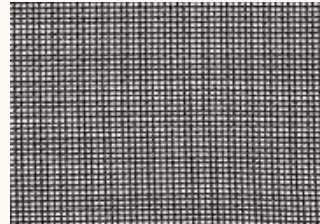
NORDLUX outdoor  
wall light



Nordic spruce, finely  
sawn,  
21 x 120 mm



LED light box with  
a personalised name



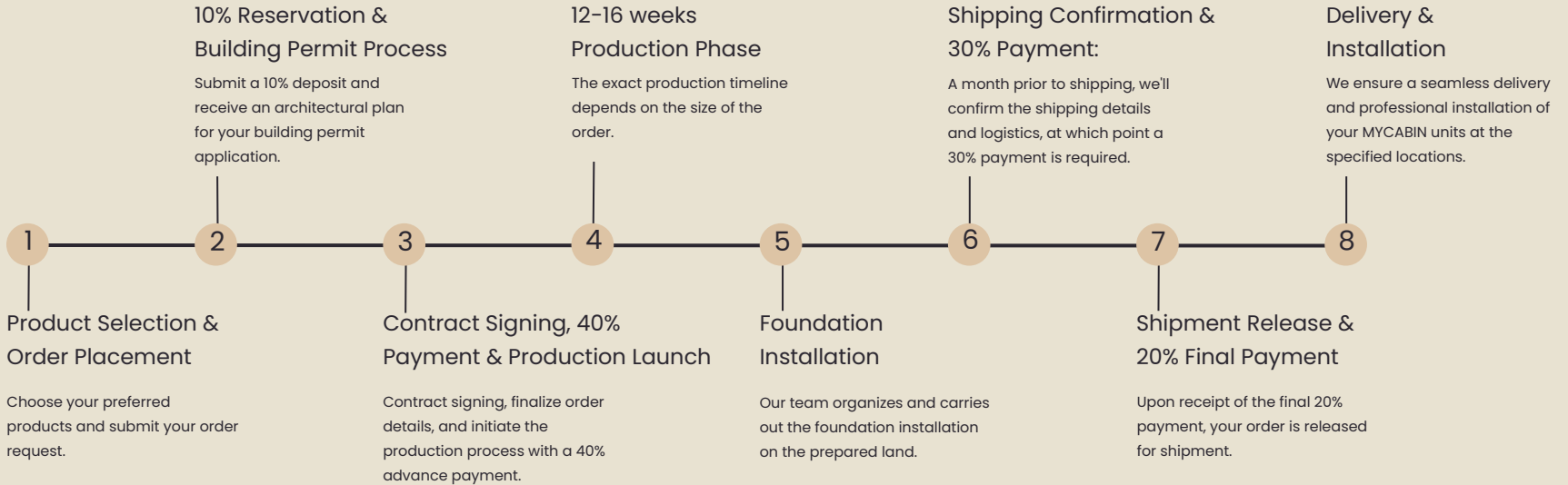
Window screen against  
insects



DRUTEX double-glazed  
single-chamber PVC  
windows and doors



# Ordering Process



# HABITAT|4D

Official Benelux Representative:

- / Habitat4D b.v.
- / JOACHIM DELFORTRIE
- / Founder & Director
- / [joachim@habitat4d.com](mailto:joachim@habitat4d.com)
- / +31 315 798 817
- / [Linkedin profile](#)



MYCABIN factory:

- / SIA MYCABIN
- / MĀRTIŅŠ DZIEDĀTĀJS
- / Partner & CCO
- / [martins@mycabin.lv](mailto:martins@mycabin.lv)
- / +371 29 490 418
- / [Linkedin profile](#)

